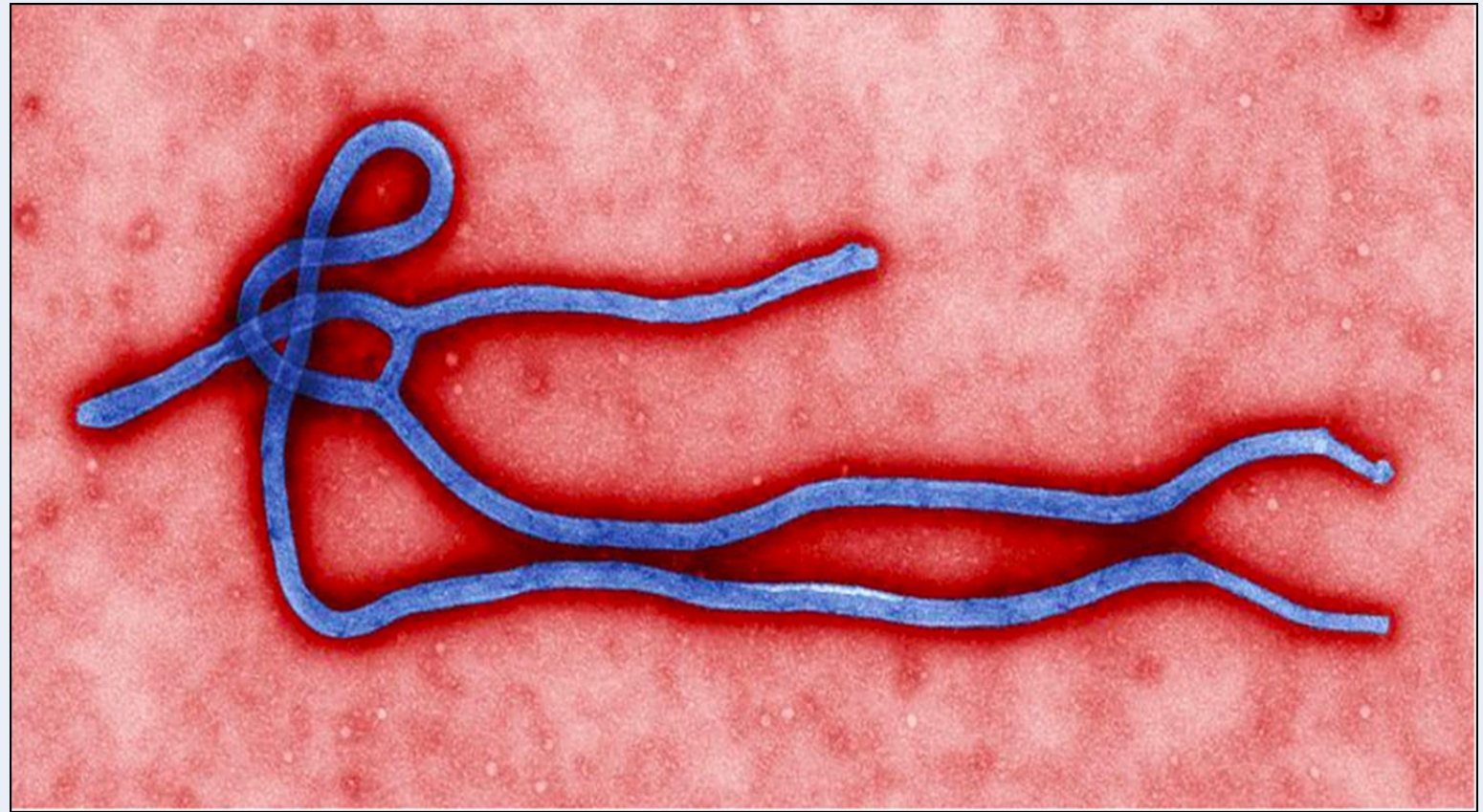
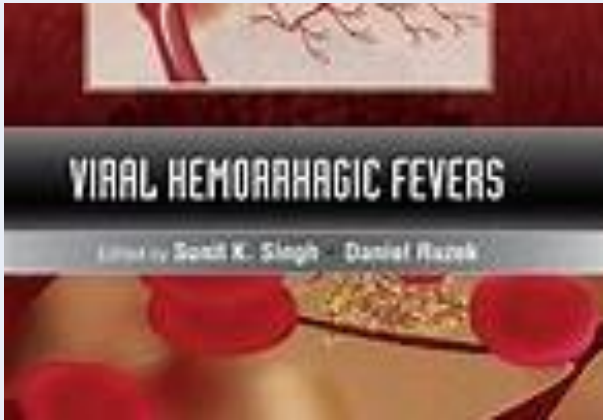


# Infection Prevention and Control Management of a patient with Viral Haemorrhagic Fever





## **Infection control principles preparing the patient area**

The FED pack/cupboard contains supplies for the initial 24 hours and the outbreak manual cards will support ordering etc. of additional suppliers

# The patient care area



# Minimum requirements in Isolations

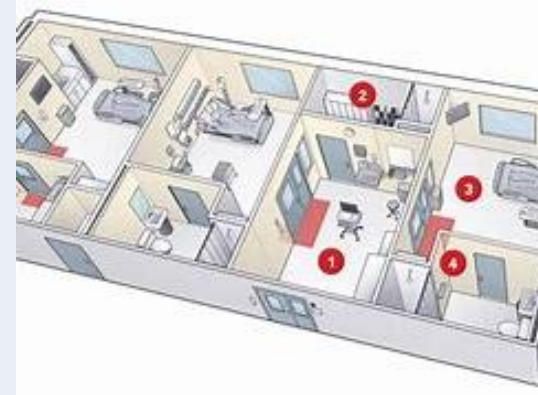


## **3: Green Supportive Area:**

The area that provides support services to the isolation area.

This is a relatively safe area where equipment's and records are kept

Should have a hand washing basin



## **1: Red Isolation Area:**

To accommodate the patients with explicit barrier nursing techniques. This is a high-risk area which is highly contaminated and holds a serious risk for unprotected staff. The patient room with an adjoining toilet or sluice and a hand wash basin. The isolation area must have a door that can close.

## **4: White Area:**

Should be used for rest, refreshments and relaxation.

An adjacent changing room for healthcare workers to use when showering and changing clothes will be an advantage.



## **2: Yellow Transit Area**

Ante -Room that forms the barrier between the dangerous isolation area and the outside environment. This is a medium risk area used mainly to decontaminate staff and waste leaving the isolation area. It is however the most important area to ensure safe isolation practices. Should have a hand washing basin



**Use specified areas as identified in hospital specific outbreak/emergency plan**

# Early recognition and infection control is the key to preventing spread of VHF



# Standard precaution PPE

**MASK**

**SAFETY GLASSES**

**GLOVES**

**PLASTIC APRON**



Here we start

## Standard Precaution PPE



# Donning of the FED Pack

# Step 1



Trousers tucked into Gumboots



Knee high Booties/Cover Shoes

1<sup>st</sup> Pair of Gloves



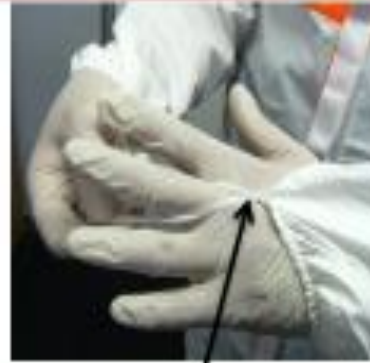
Step 1 completed



# Step 2



Practice point: Exposed skin not acceptable, gloves not adequately tucked under sleeves



Finger loop on Uvex coverall ensuring sleeve does not creep



Ensure Gloves are adequately tucked under coverall sleeves



Step 2 Completed

# Step 3



Step 3 Completed

Ensure Apron is placed over hood



When tying apron at back make sure you to leave easy access to untie the knot: butterfly knot with easy-to-untie longer strap



# Step 4



Finger loop seen through outer glove ,show good position of sleeve relative to inner pair of gloves



Outer gloves taped in Clockwise direction

Be sure to create a lip for ease of access when removing



# Step 5



1. Fold N95 at metal strip



2. Expose elastic straps



3. Place thumbs and index fingers as illustrated



4. Position under chin



5. Pull straps over head



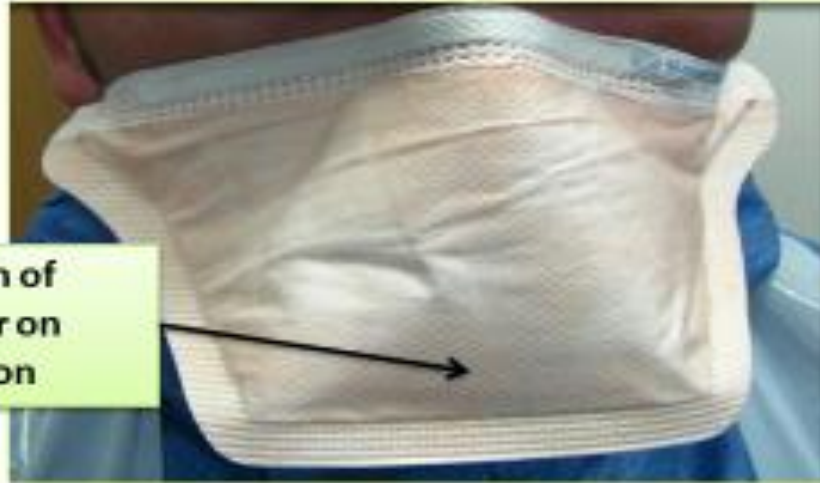
6. Position straps and shape metal piece over nose bridge

# Step 5 Continued



**Practice point:**  
Respirator strap  
positioned  
uncomfortably over  
ear.

**Expansion of  
Respirator on  
exhalation**



**Retraction of Respirator  
on inhalation**



# Step 6,7,8

Don coverall hood and put goggles over hood



Adjust hood, goggles and respirator to ensure no skin is exposed



**Practise point :** Ensure that sufficient amount of coverall hood is positioned under goggles to allow movement without exposing skin



# Step 6,7,8 cont..



**Surgical hood positioned to ensure that exposed neck area is covered**

**Some models of coveralls are designed with a higher neck and cover flap to protect the neck.**



# Step 9



Do final check of all PPE and adjust where necessary, ensuring that person is well protected and comfortable

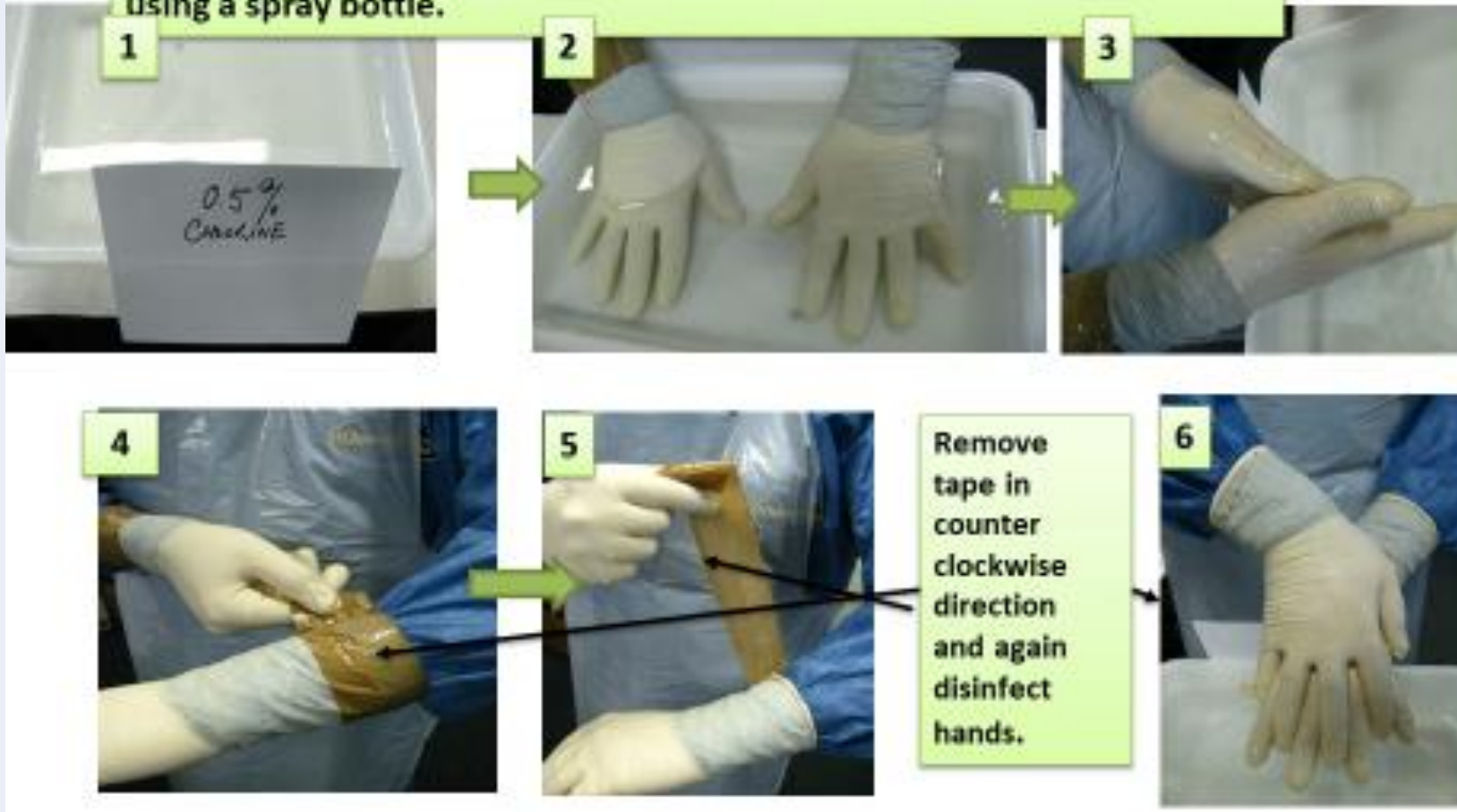
- Final Check**
- Any exposed skin
  - Position of Gloves
  - Breaches in the seams
  - Comfort and practicality



# Doffing of the FED Pack

# Doffing Step 1

Using a 0.5% solution of chlorine, decontaminate outer pair of gloves. Can be done either by washing hands in bowl containing the solution (preferable to avoid spray aerosols) or "buddy" can gently spray hands using a spray bottle.



# Step 2



# Step 3



1. Buddy assist by releasing apron top



2. Let apron fold over it self, grasping only the inside edge



Apron inside out, folded over



3. Buddy assists releasing back tie.



4. Grasping only the straps or inside edge of apron, fold inside out as illustrated



5. Dispose in Healthcare waste box and disinfect hands



# Step 4



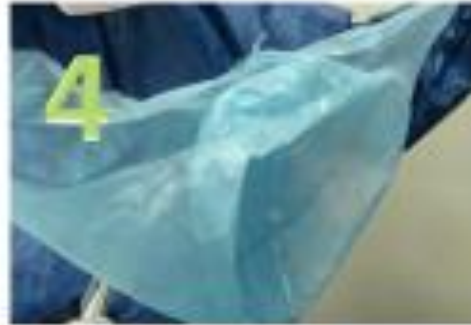
**1. Buddy assists in releasing tie**



**2. Grasping on edge of strap pull hood inside out whilst tilting the head down and out.**



**3. Hood now inside out pulled away from head**



**4. Dispose in Healthcare waste box**



**5. Disinfect hands**

# Step 5



1. Clasp side edge of goggles



2. Pull goggles away from face



3. Dip head down and out while holding goggles in same position



4. Once strap has slid over head move goggles straight away from face



5. Re-useable goggles can be put in 0.5% chlorine solution



6. Disinfect hands

# Step 6



1. Open zip protection flap by moving only one hand on the inside of the material and work your way down slowly



2. With guidance of buddy find zipper and while keeping tension on zip, start unzipping in one steady movement



Practice point: Care has to be taken not to touch exposed skin of neck



3. Disinfect hands

# Step 7



Grasp hood with both hands, lift hood high over head and let it fall back away from head and neck. A Mirror is advantageous or buddy could assist



Practice point: Incorrect position of hood touching exposed skin of neck and head



Good position of hood away from neck and head



# Step 8



Buddy assists by moving hands on inside of coverall peeling open and over shoulders and then pulling coverall down until person can assist them self. Let coverall hang of sides.



Peel coverall off inside out and always only touching inside of suit.



# Step 8 Cont..



Work the coverall inside out until the booties/boots are visible



Create a generous lip with the booties over the coverall



Work the coverall inside out until foot can be released and step out away from suit



# Step 8 cont...



Follow same steps to release 2<sup>nd</sup> foot, again step away from suit



Coverall/booties completely turned inside out, bunch together and place inside healthcare waste box.



# Step 9



1. Grasp and hold side edges of respirator



2. Buddy assists by releasing top and bottom straps



3. Push respirator straight away from face and place in healthcare waste box

# Step 10



Finally follow illustrated step to remove inner pair of gloves



Discard gloves in healthcare waste box and disinfect hands with 0.05% solution of chlorine

# VHF PPE



# Questions?



What is wrong here??